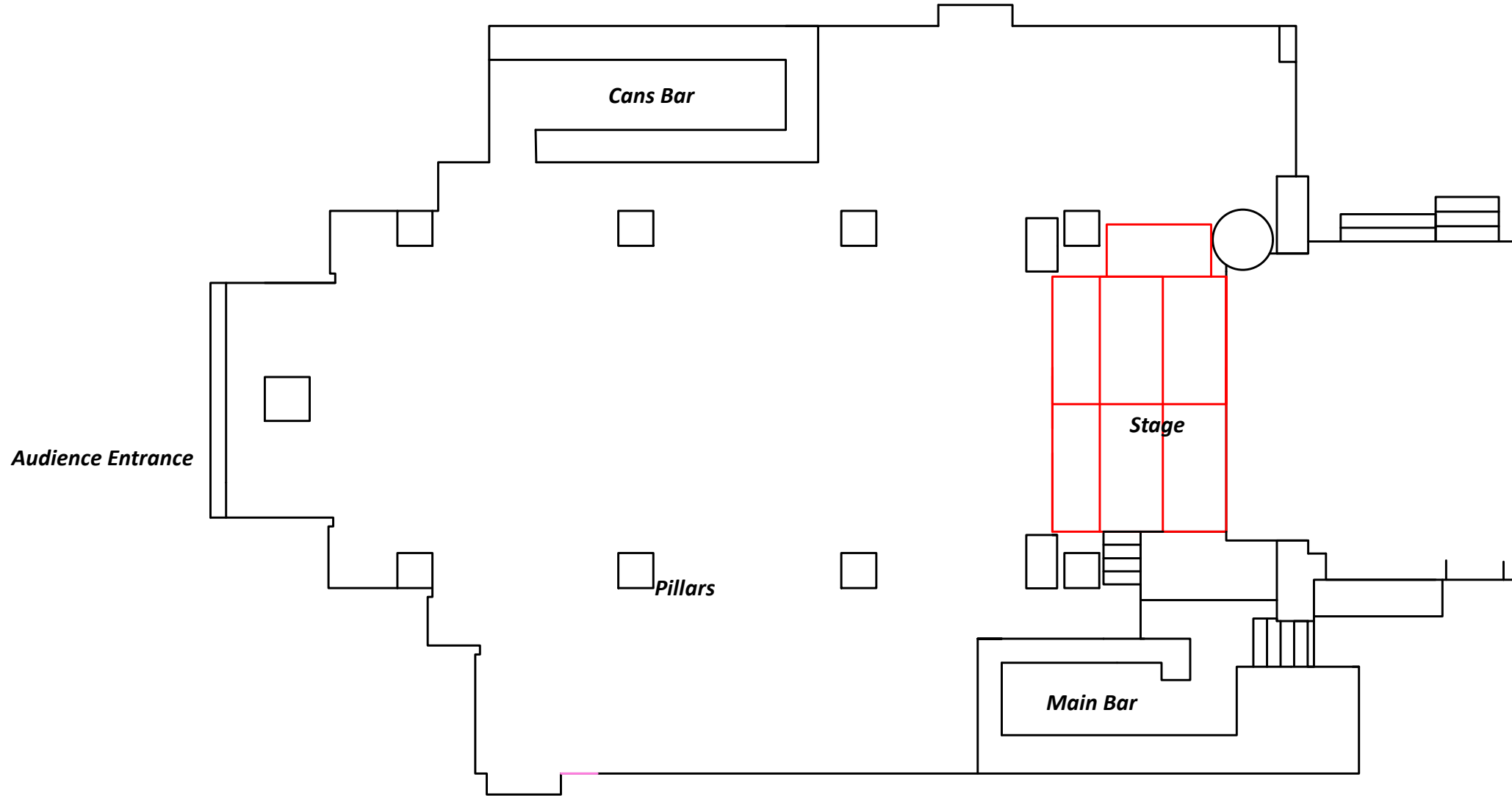
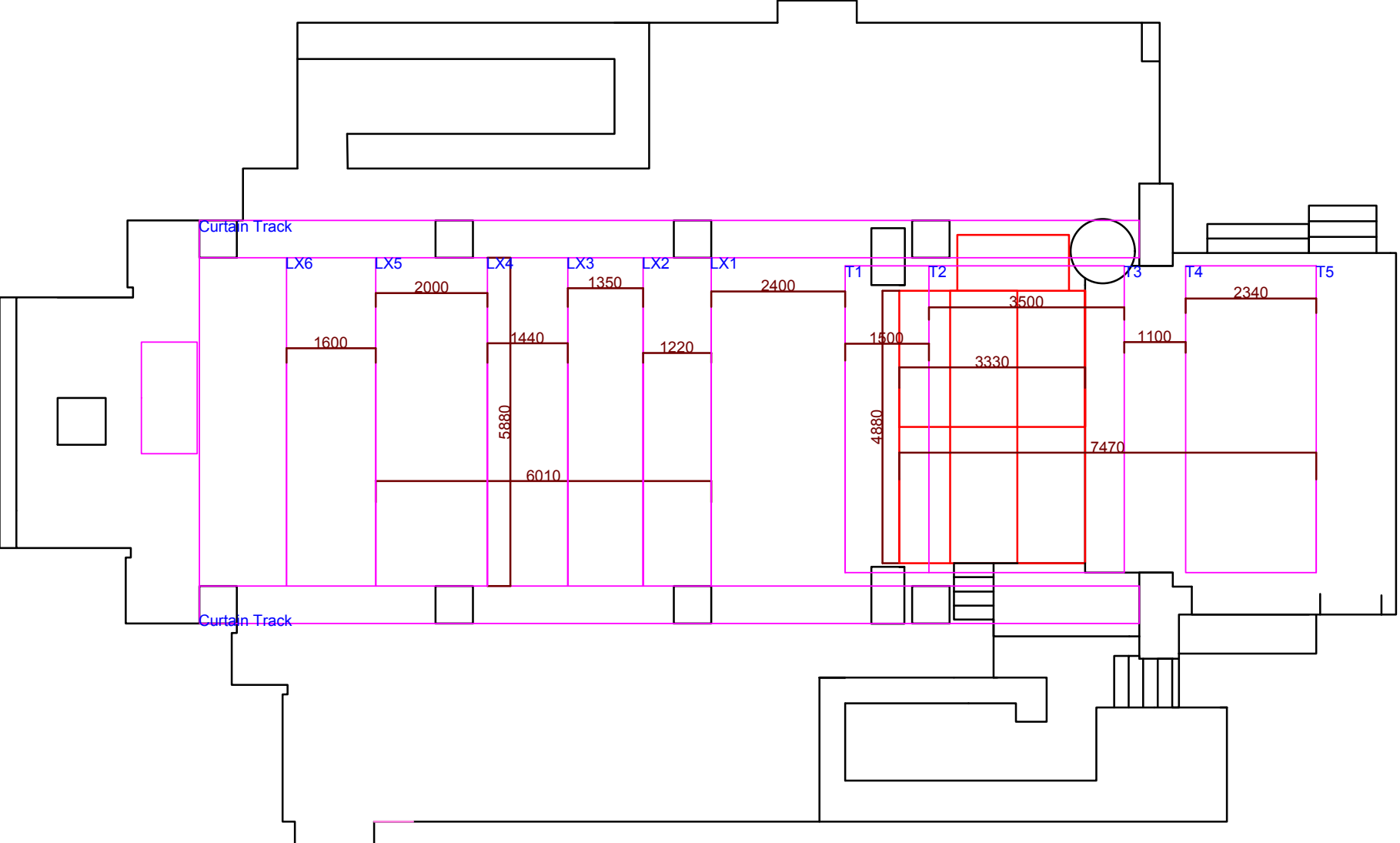


**Drawing no. 1**  
**Empty Space in Alternative Wonderful**  
**Wednesday Set up**




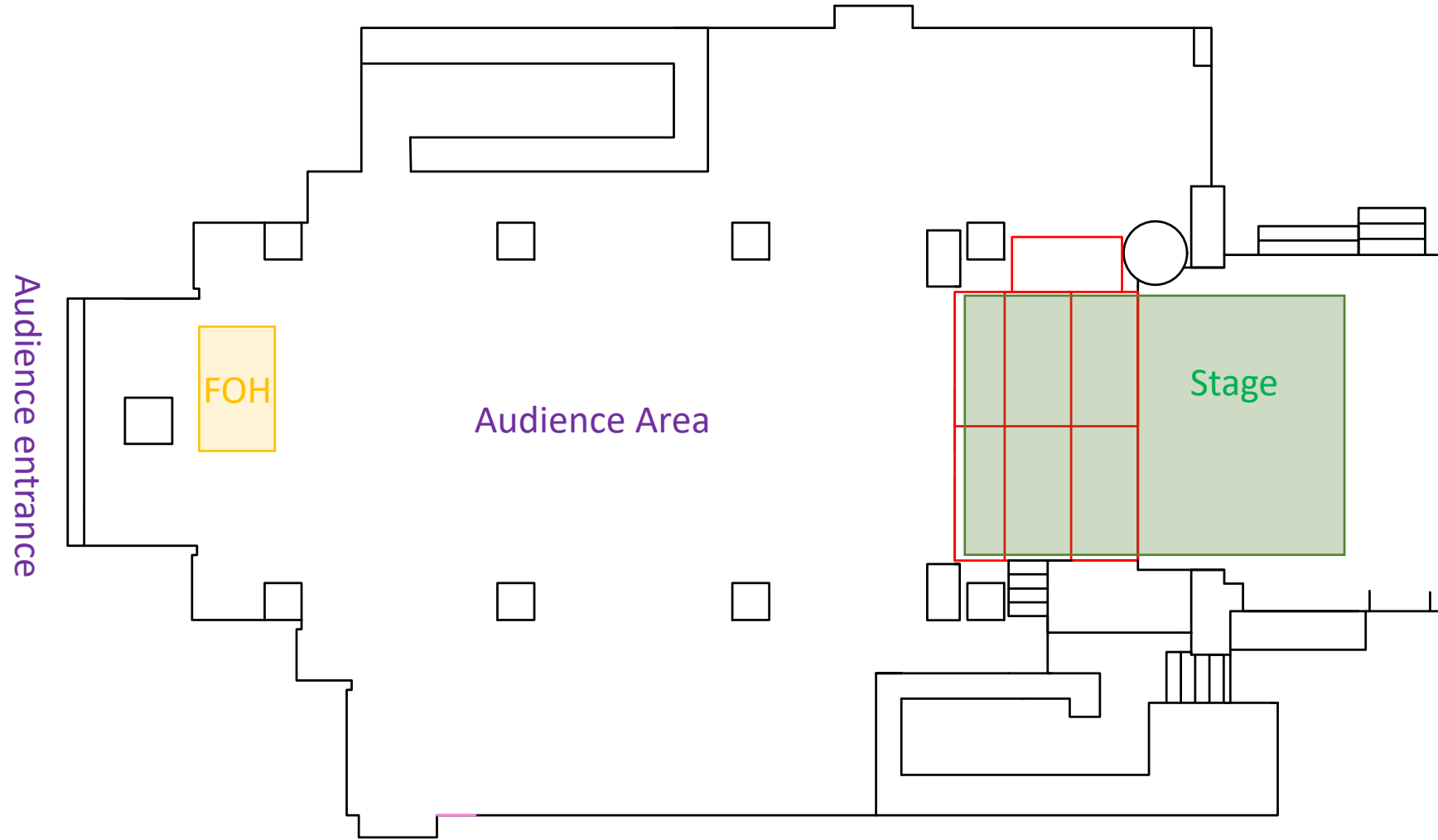
**Drawing no. 2**  
**Main Space with lighting rig and**  
**dimensions**




*Drawing no. 3*

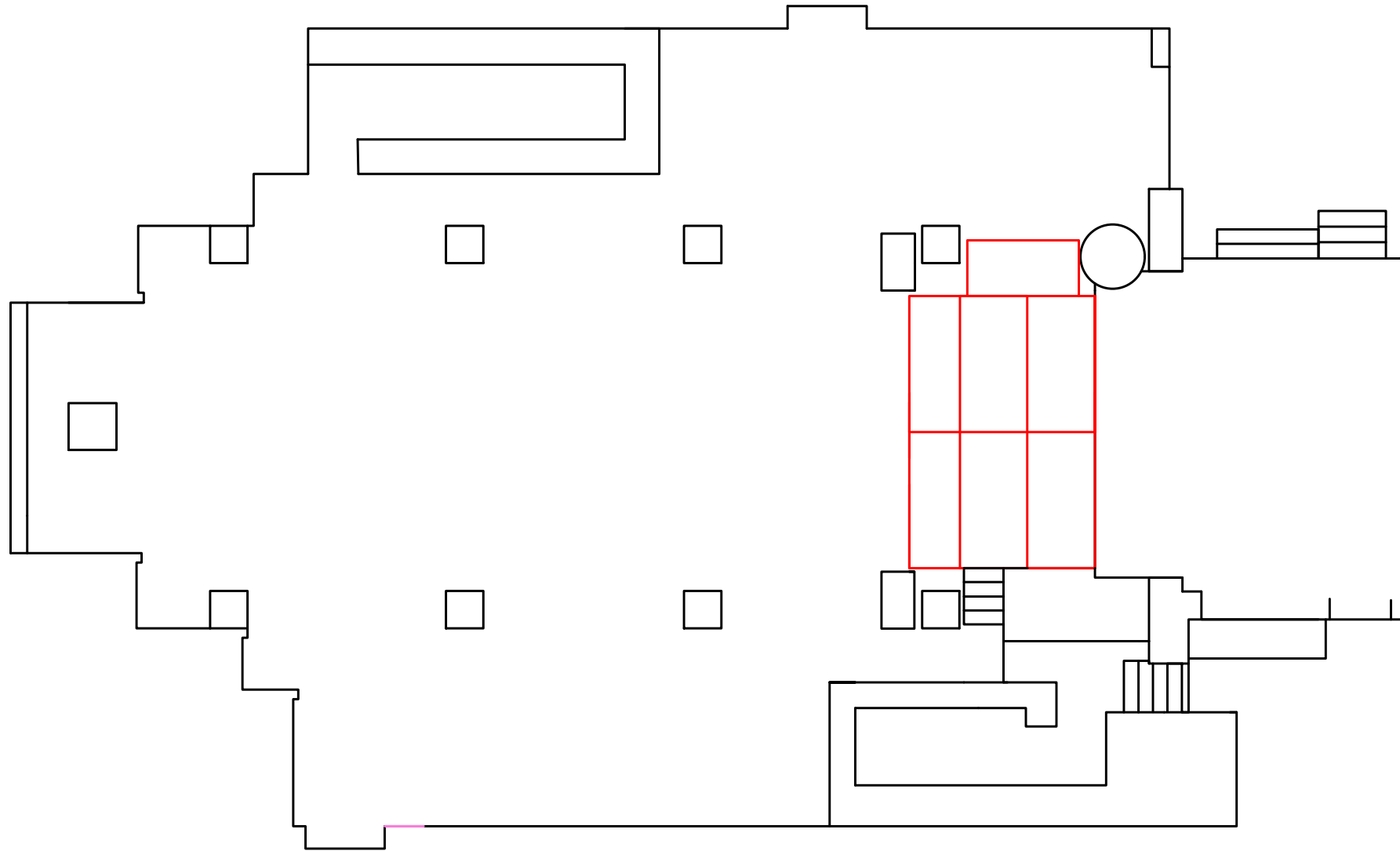
*Blank Main space with area markers for  
Alternative Wonderful Wednesday Set up*

 : Removable Stage Front (only sold-out comedies usually)




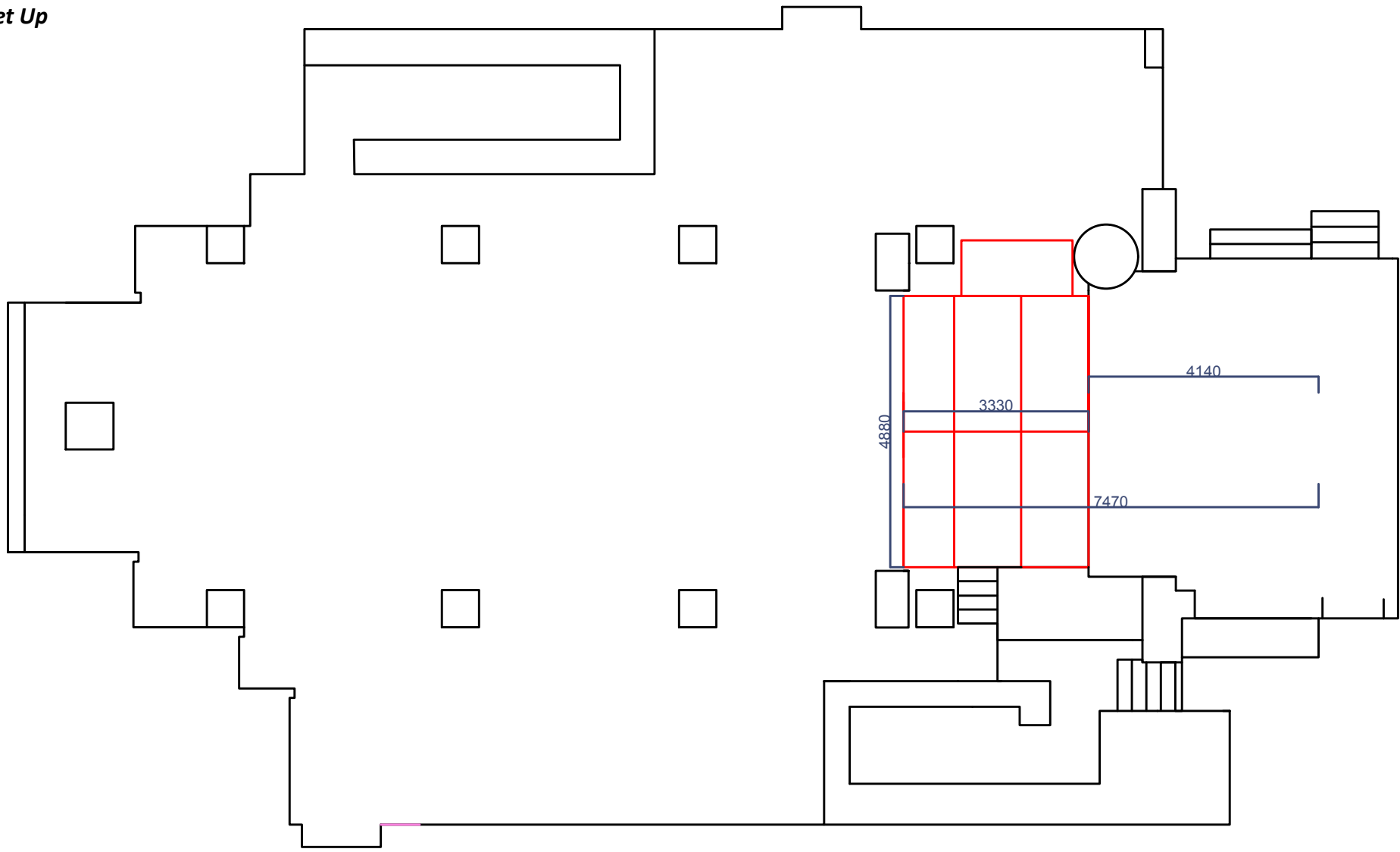
*Drawing no. 4*  
*Blank Main Space for*  
*Alternative Wonderful*  
*Wednesday Set Up*

 : Removable Stage Front (only sold-out comedies usually)



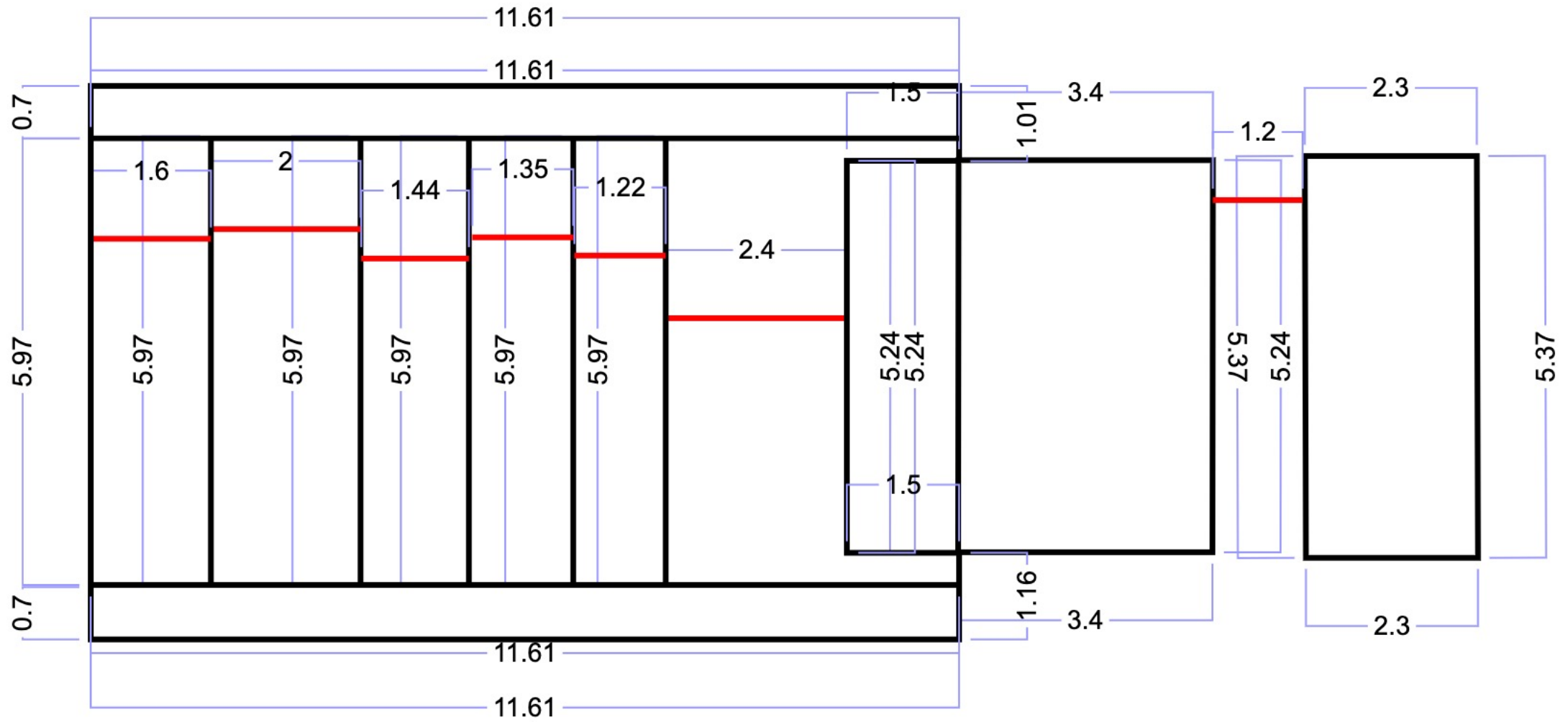
**Drawing no. 4**  
**Blank Main Space with**  
**stage dimensions for**  
**Alternative Wonderful**  
**Wednesday Set Up**

 : Removable Stage Front (only sold-out comedies usually)

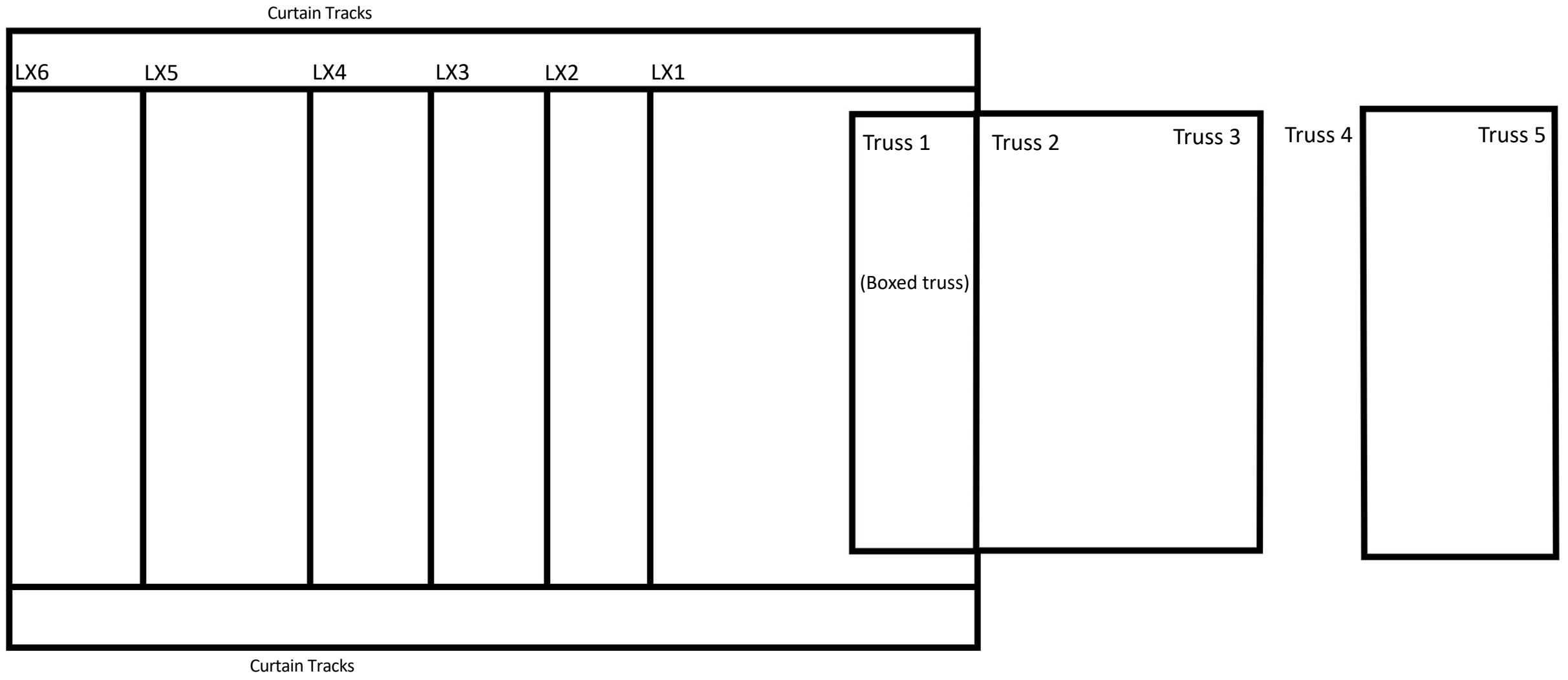




Drawing no. 7  
Lighting rig with dimensions (2D box truss)





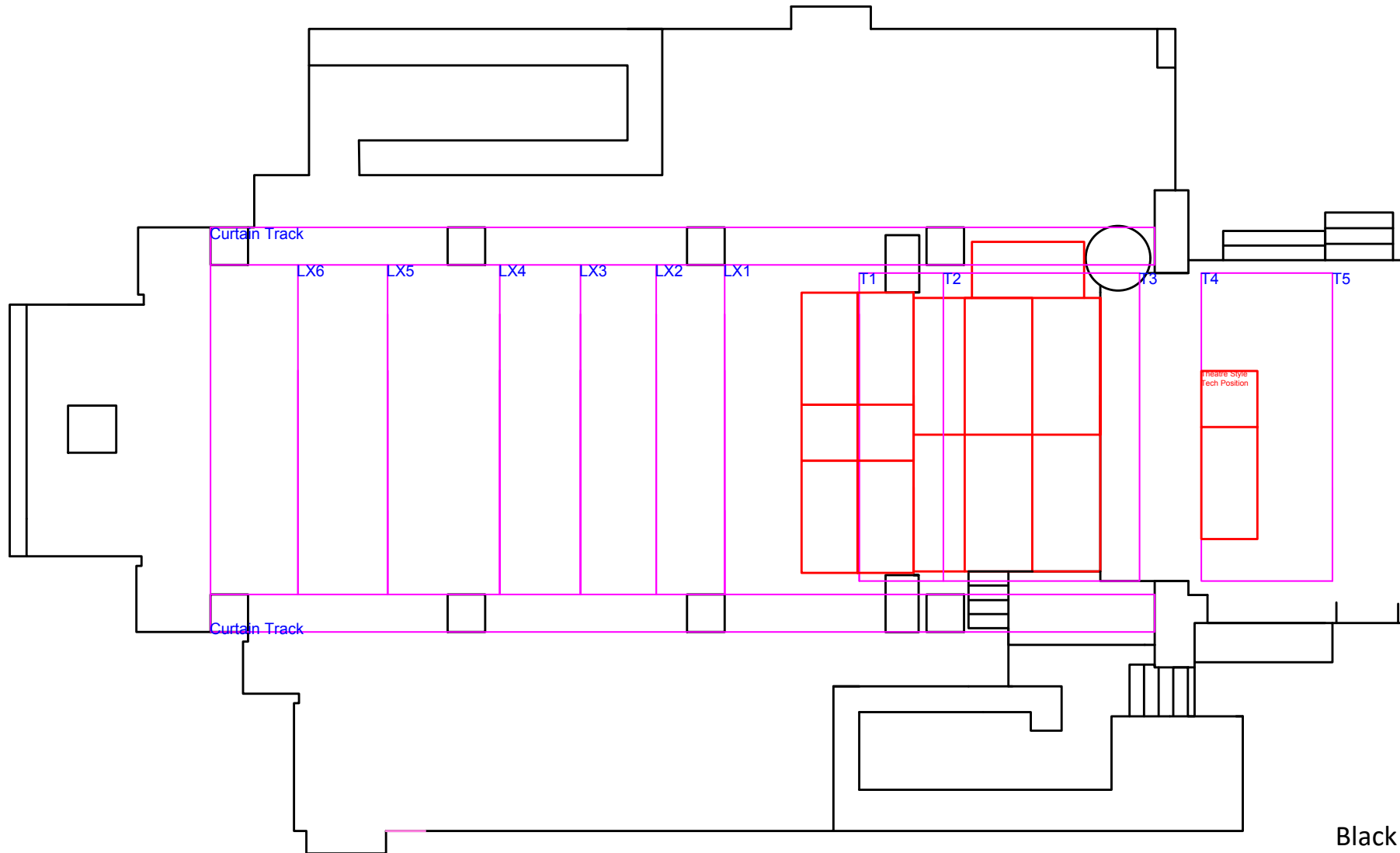
**Drawing no. 8**  
**Blank lighting rig**





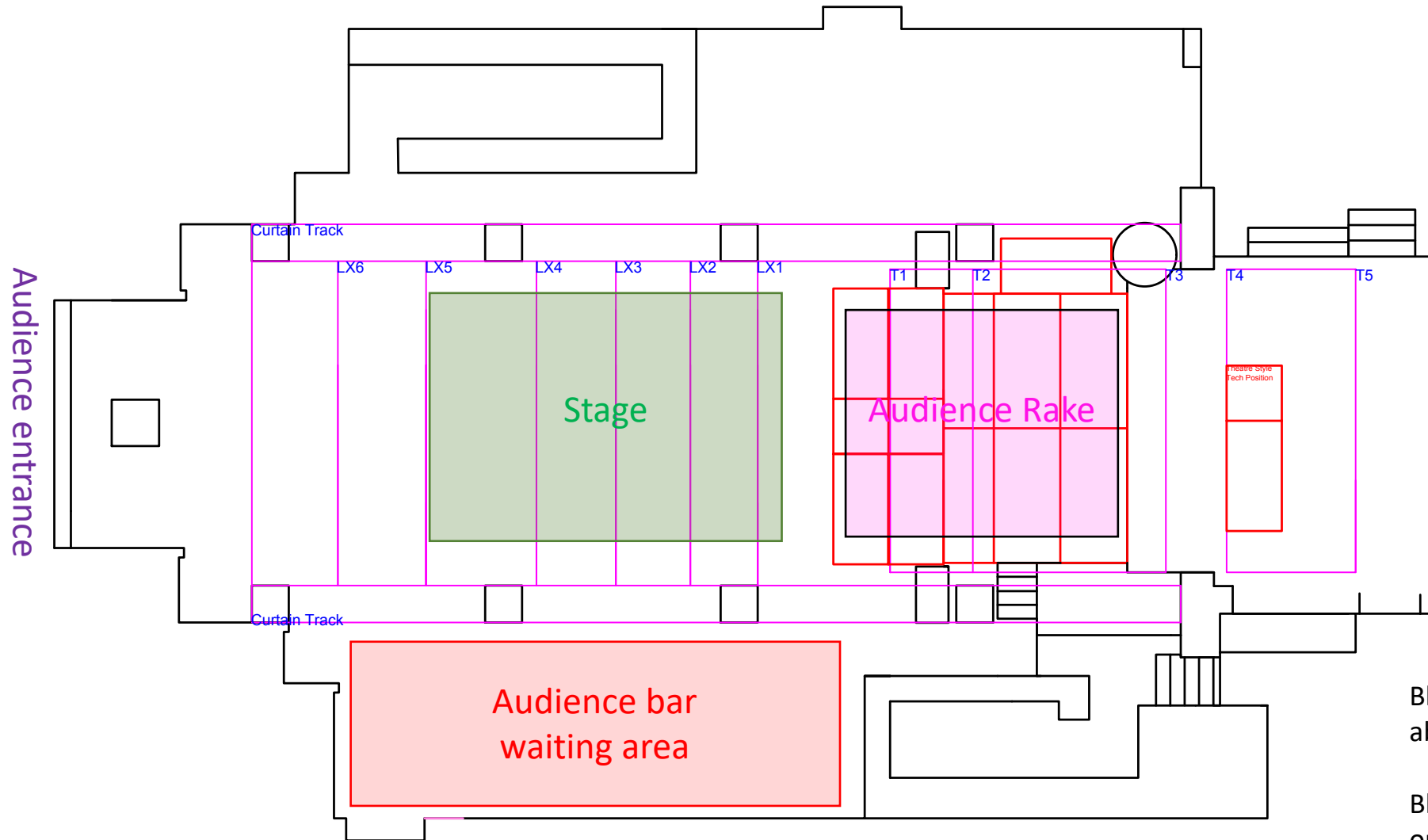
**Drawing no. 9**  
**2D Rendering of Theatre/Wonderful Wednesday**  
**Layout**

 : Stage rake and tech position  
 : Rig



Black cloth for black box sits  
on LX5

**Drawing no. 10**  
**2D Rendering of Theatre/Wonderful Wednesday**  
**Layout with notes**



Black box performance area is about 6M deep by 5M wide.

Black cloth for black box sits on LX5.

Setting line is LX1 (depending on sales).