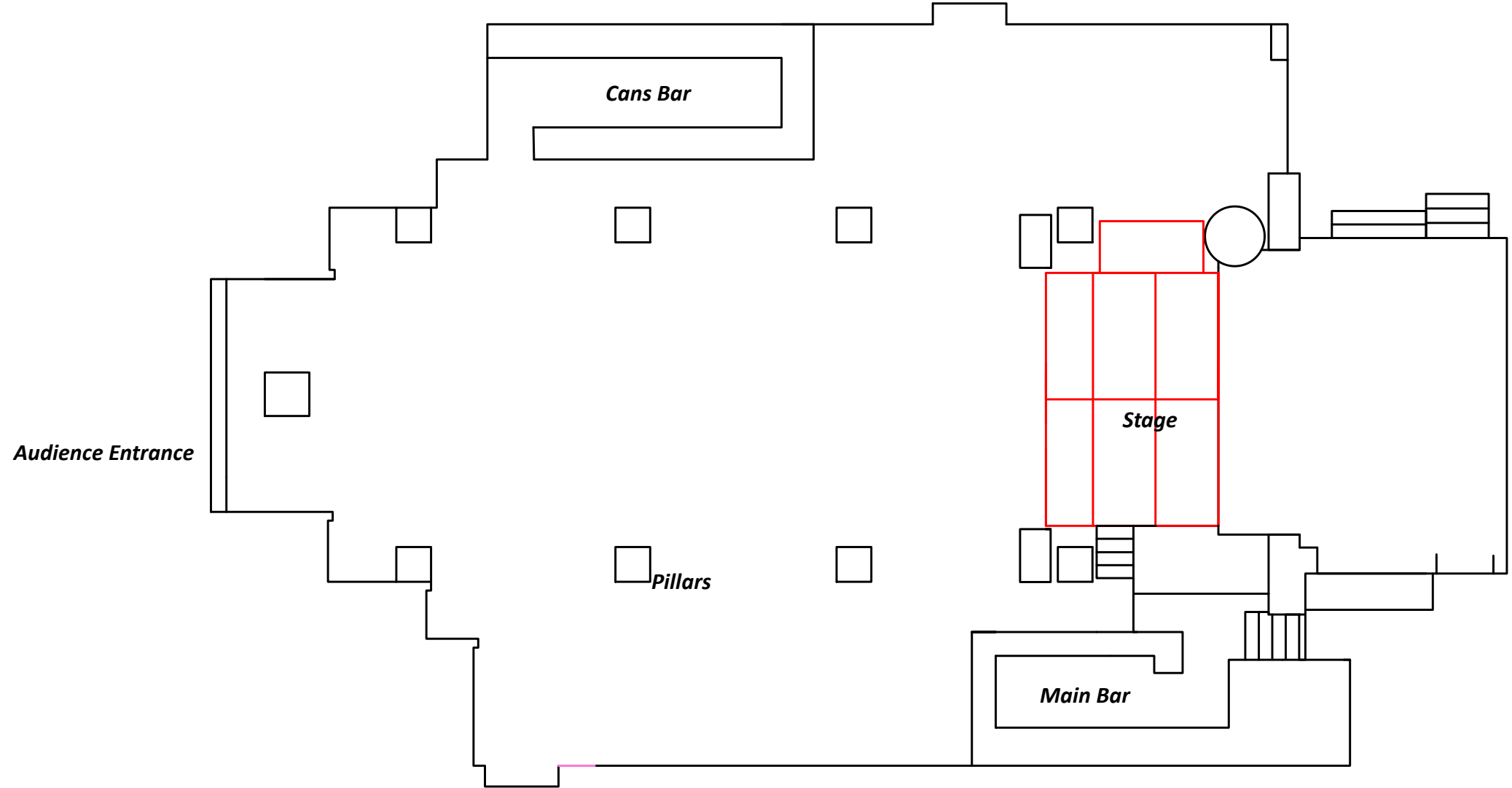
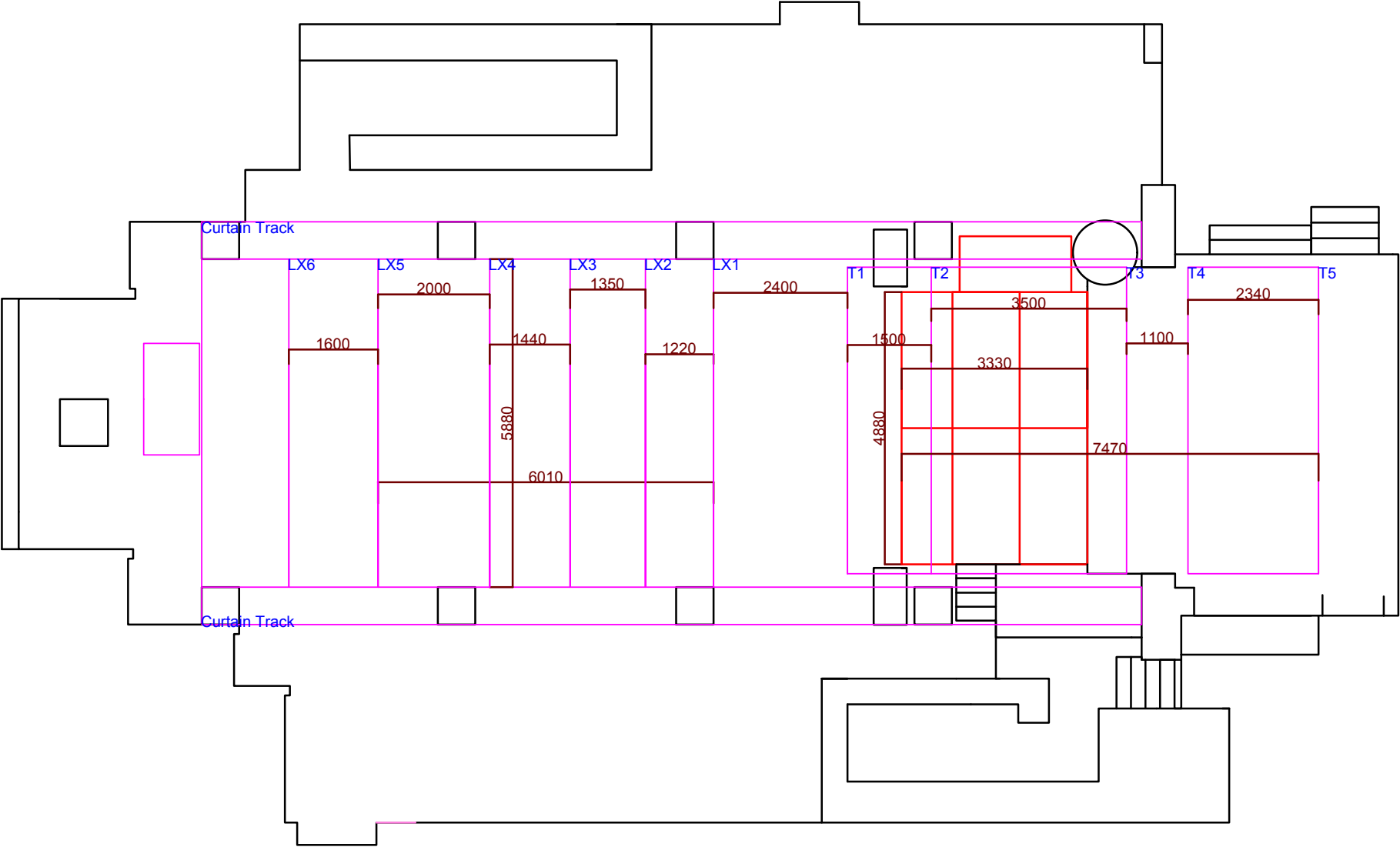


Drawing no. 1
2D Rendering of main space in standard layout
with notes




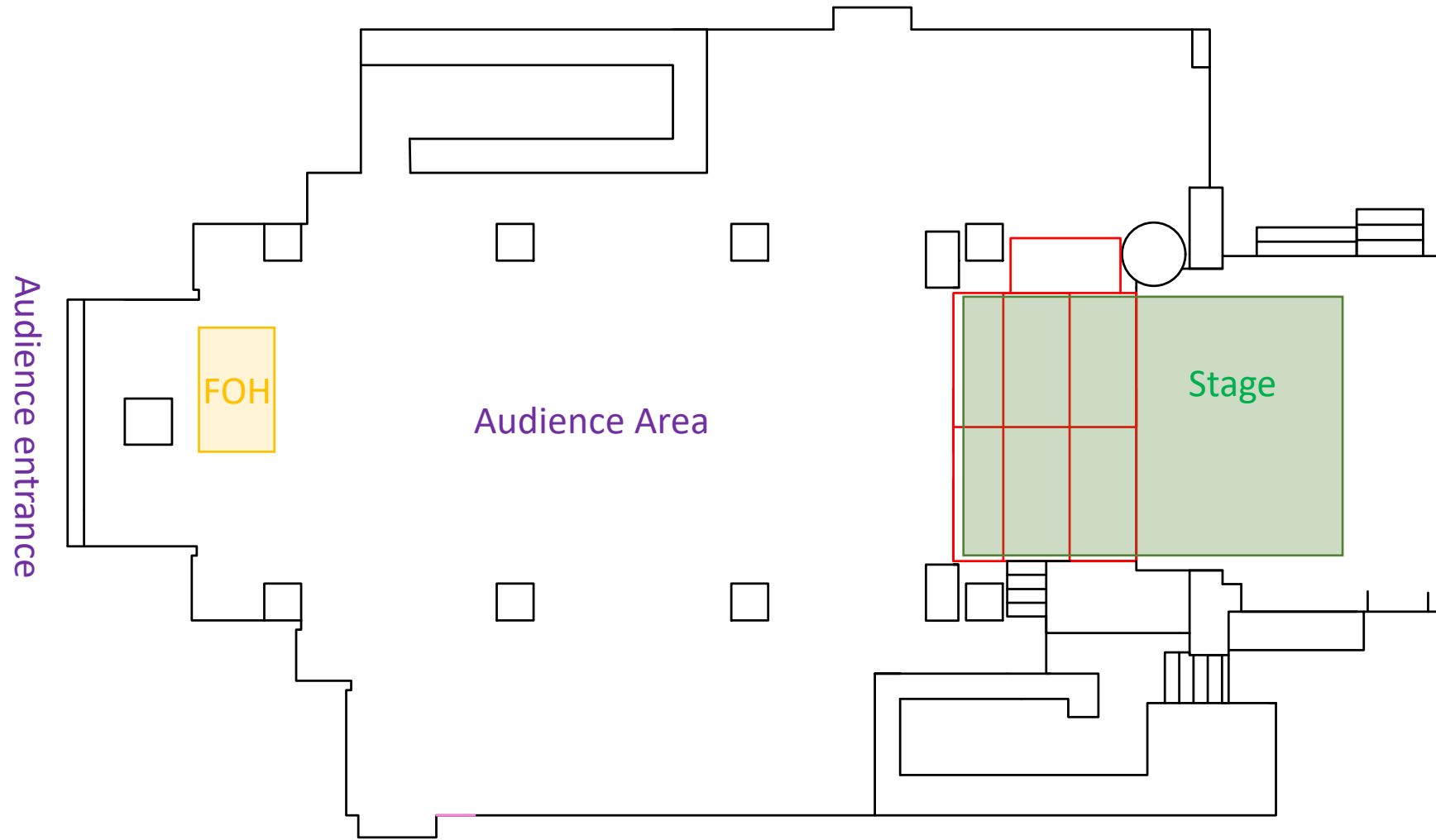
Drawing no. 2
Main Space with lighting rig and
dimensions




Drawing no. 3

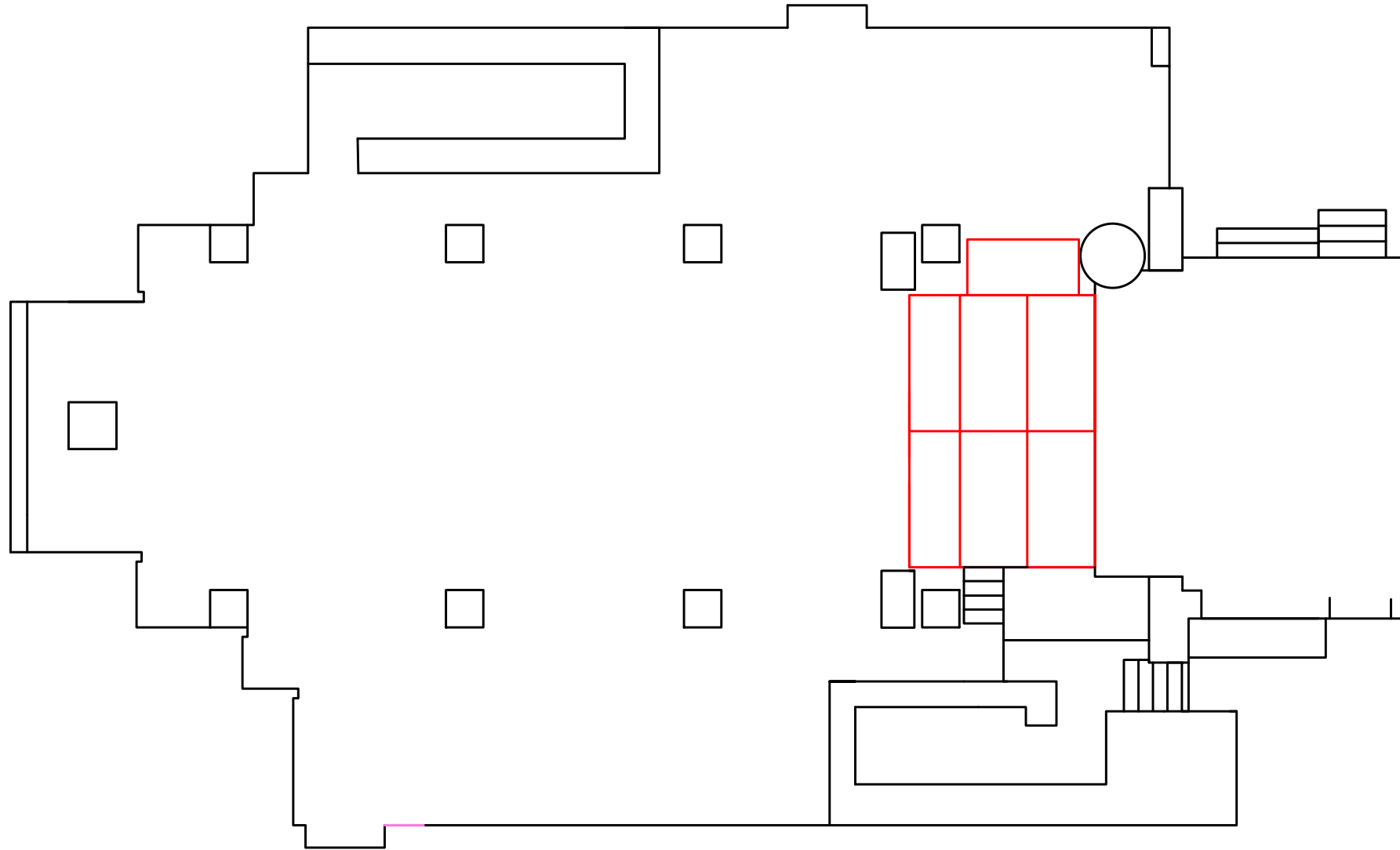
Blank Main space with area markers for standard stage layout

 : Removable Stage Front (only sold-out comedies usually)




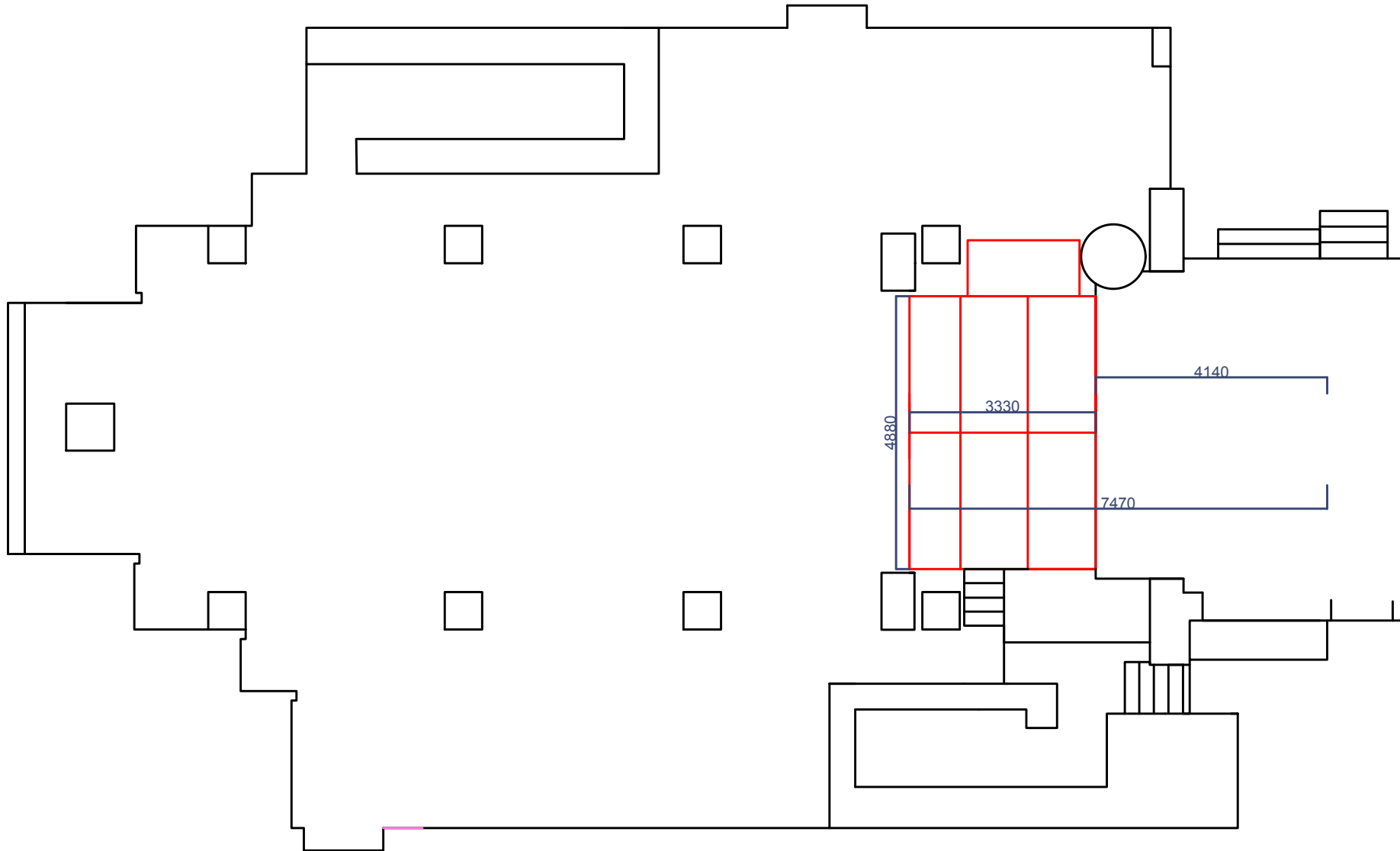
Drawing no. 4
Blank Main Space

 : Removable Stage Front (only sold-out comedies usually)

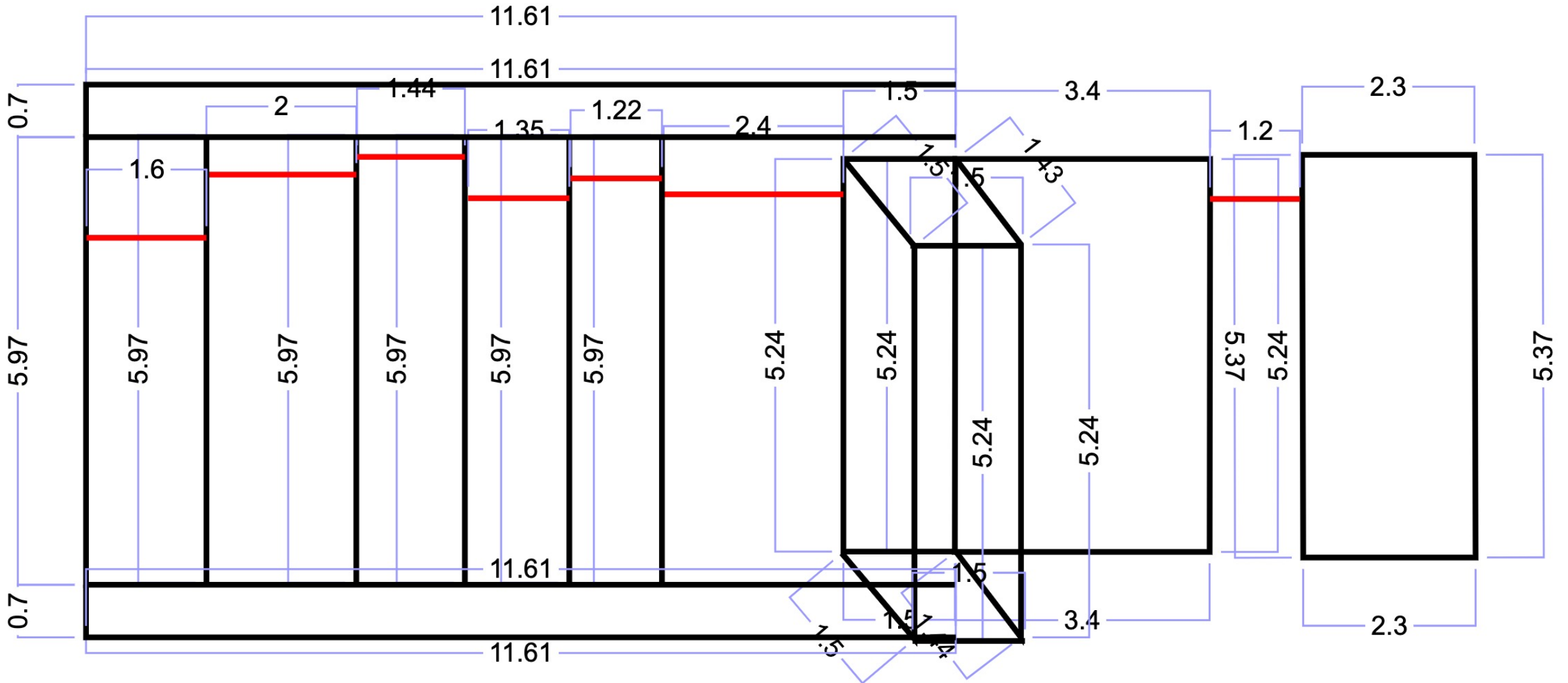


Drawing no. 4
Blank Main Space with
stage dimensions

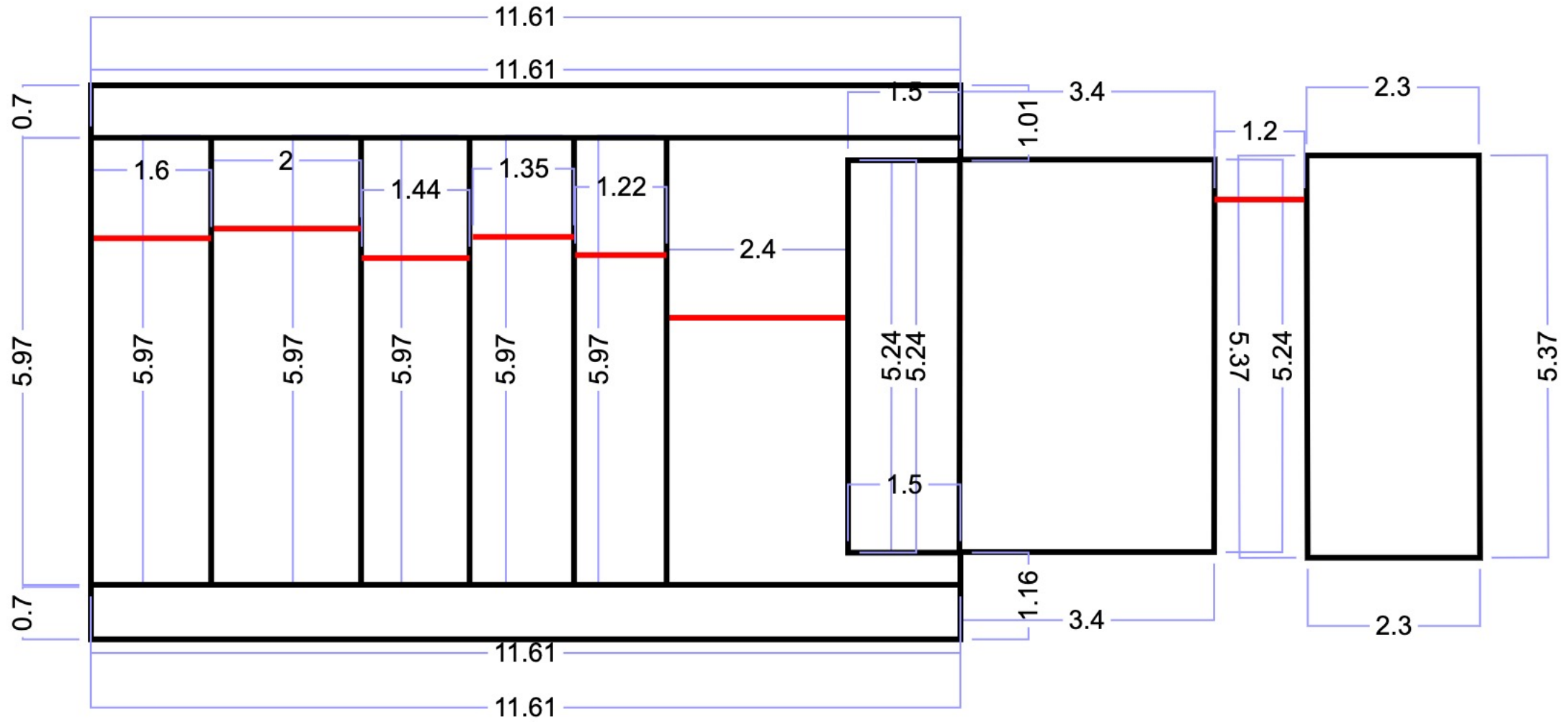
 : Removable Stage Front (only sold-out comedies usually)



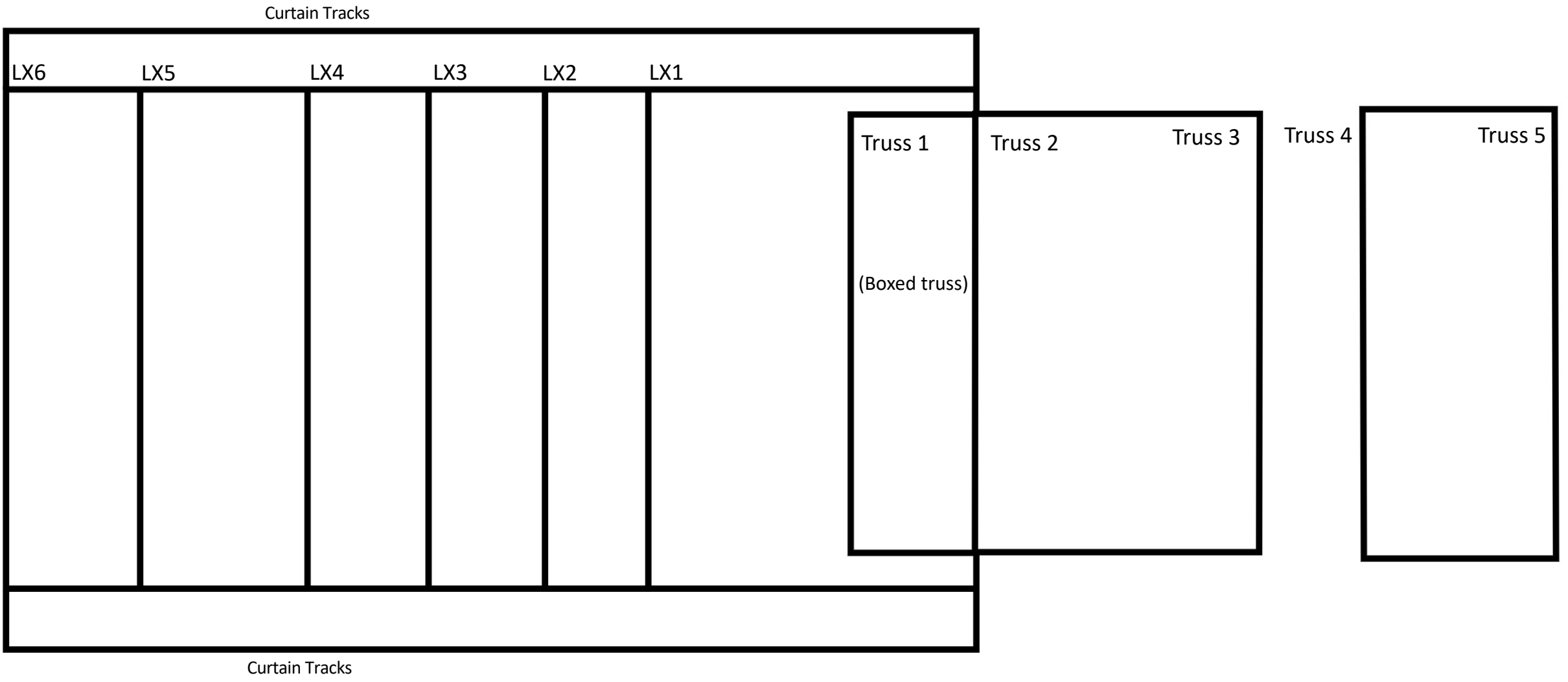
Drawing no. 6
Lighting rig with dimensions (3D box truss)





Drawing no. 7
Lighting rig with dimensions (2D box truss)

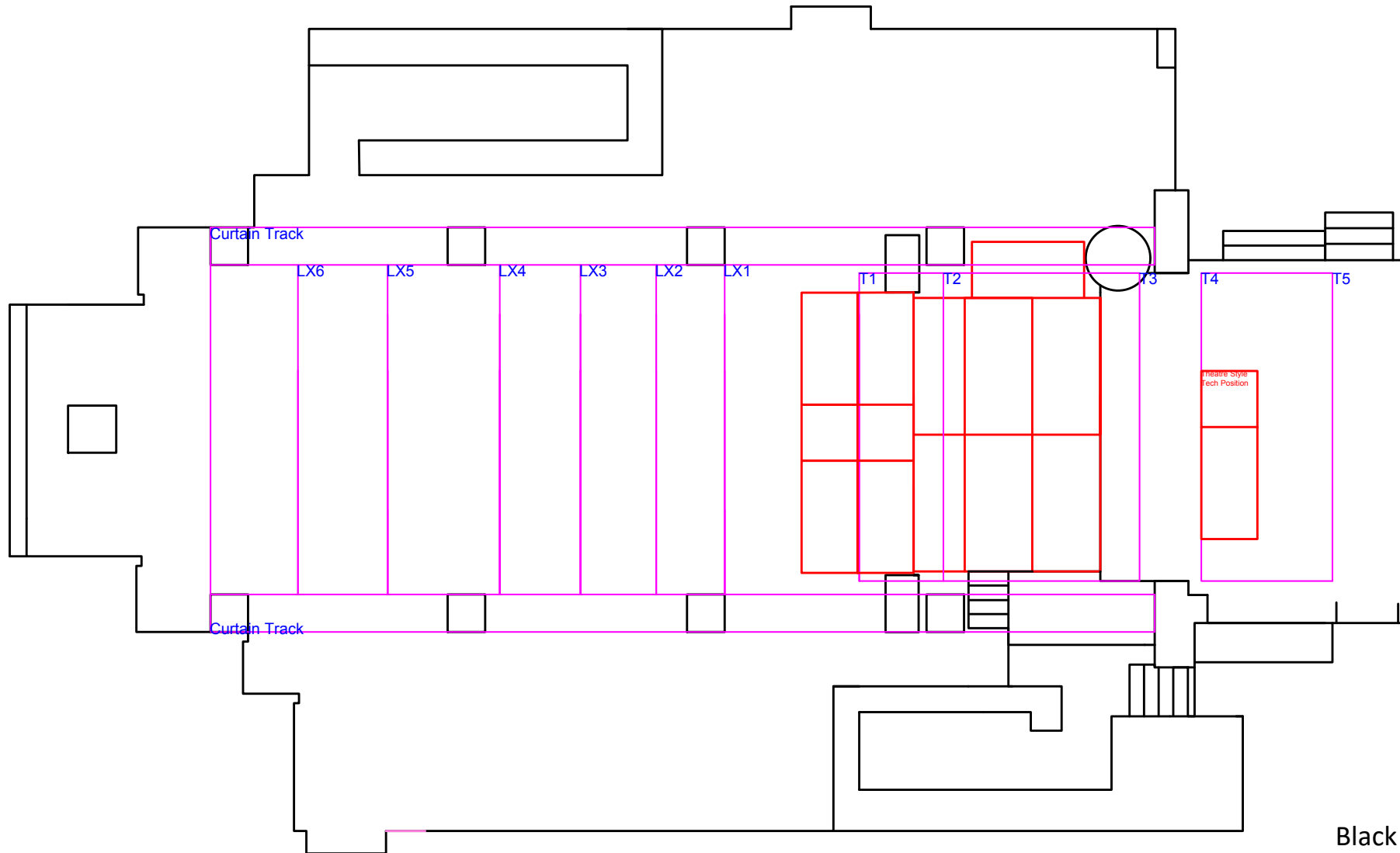


Drawing no. 8
Blank lighting rig



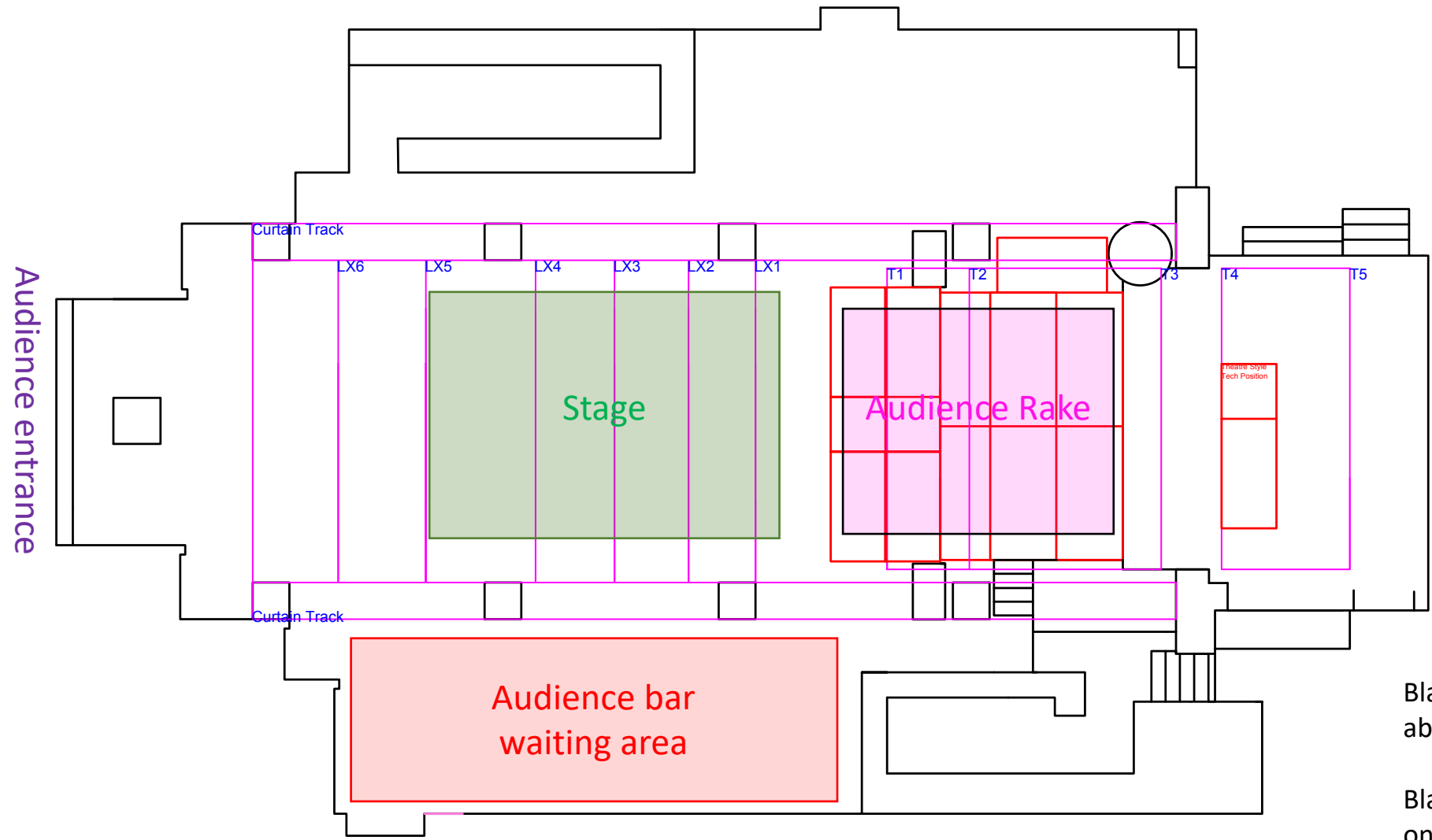
Drawing no. 9
2D Rendering of Theatre/Wonderful Wednesday
Layout

 : Stage rake and tech position
 : Rig



Black cloth for black box sits
on LX5

Drawing no. 10
2D Rendering of Theatre/Wonderful Wednesday
Layout with notes



Black box performance area is about 6M deep by 5M wide.

Black cloth for black box sits on LX5.

Setting line is LX1 (depending on sales).